



**Professional Staff**

Occupational Therapists, Physical Therapists  
and Certified Orthotic Fitters

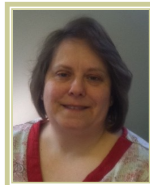


Selena McGill  
OTR/L, CHT  
DIRECTOR

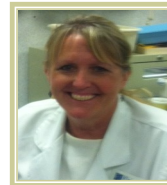
*“Our goal is  
to  
restore the  
patient to  
maximum  
function and  
quality of life,  
associated  
with strong,  
healthy hands  
and arms.”*



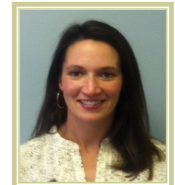
Laurie Newsome  
PT, CHT



Becky Shain  
PTA



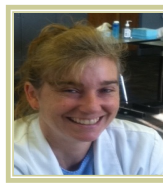
Diane Helm  
PTA



Ashley Buren Emrich  
OTR/L, CHT



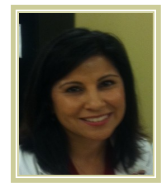
Rob Roberts  
PT



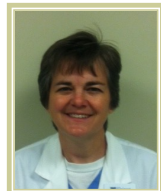
Kim Bailey  
PTA



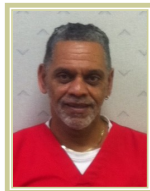
Walter Thompson  
PTA



Jyoti Heiple  
OTR/L, CHT



Jamie Royalty  
PT, CHT



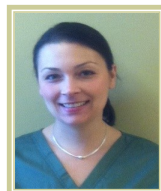
Greg Frey  
COF



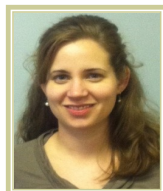
Garry Burke  
COF



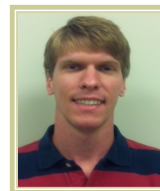
Joyce Lay  
OTR/L, CHT



Holly Habeeb  
PT



Cindy Mosher  
PT



Jackson Gall  
MS, OTR/L



Ariela Flory  
OTD, OTR/L

**New Patient Appointments:**

502.561.4236  
Downtown Therapy: 502.561.4295  
Downtown Orthotics: 502.561.4236  
East: 502.562.0334  
New Albany: 812.981.4735  
Chamberlain Pointe: 502.562.0344

[www.KleinertKutz.com](http://www.KleinertKutz.com)

**Downtown Office**

225 Abraham Flexner Way, Suite 650-Therapy  
Suite 760—Orthotics

**East Office**

Baptist East Medical Pavilion,  
3900 Kresge Way, Building B, Suite 43

**New Albany Office**

3605 Northgate Court, Suite 102

**Chamberlain Pointe Office**

4642 Chamberlain Lane, Suite 202